



The Scottish Football Museum

Hampden Park, Letherby Drive, Mount Florida, Glasgow, G42 9BA

0141 6166 139 (tel:0141 6166 139)

Send email (<mailto:info@scottishfootballmuseum.org.uk>)

Visit website (<http://www.scottishfootballmuseum.org.uk>)



Access Guide

Introduction

- Services/facilities within the building include the Scottish football museum.
- Services/facilities within the grounds include Hampden stadium, Hampden Experience tours and a café/bar.
- Related link Scotland's National Stadium.
- <https://www.accessable.co.uk/glasgow-city-council/access-guides/scotland-s-national-stadium> (<https://www.accessable.co.uk/glasgow-city-council/access-guides/scotland-s-national-stadium>)
- Related link Hampden Experience - Tour.
- <https://www.accessable.co.uk/venues/hampden-experience-tour> (<https://www.accessable.co.uk/venues/hampden-experience-tour>)
- Related link Hampden Café.

- <https://www.accessable.co.uk/glasgow-city-council/access-guides/hampden-cafe> (<https://www.accessable.co.uk/glasgow-city-council/access-guides/hampden-cafe>)

Opening Times

- Please contact the venue for details of opening times.

Comments

[View](#)

- Last entry is at 16.15.
- The museum is closed on match days.

Location

- The venue is situated outside the centre of the city.
- This venue is situated in Glasgow.
- The venue is not situated on a road which has a steep gradient.
- There is a bus stop within 150m (164yds) of the venue.
- The nearest mainline station is Mount Florida Station.

Parking

Photos



1



2



3



4

-
- The venue does have its own car park.

Venue Car Park

[View](#)

- Parking is free for all users.
- The car park is located at the front of the building.
- The car park type is open air/surface.

- Parking spaces for Blue Badge holders do not need to be booked in advance.
- There is/are 4 Blue Badge parking bay(s) within the car park.
- The dimensions of the Blue Badge parking bay(s) are 340cm x 500cm (11ft 2in x 16ft 5in).
- The nearest Blue Badge bay is 30m (32yd 2ft) from the accessible entrance.
- The route from the car park to the entrance is accessible to a wheelchair user unaided.
- The car park surface is tarmac.
- The car park does not have a height restriction barrier.

Drop-off Point

[View](#)

- There is not a designated drop off point.

Outside Access (Hampden Experience Entrance)

Photos



1



2



3



4

-
- This information is for the entrance located at the front of the building.
 - There is not level access into the venue.
 - The main door(s) open(s) towards you (pull).
 - The door(s) is/are double.
 - The door(s) is/are heavy.
 - The width of the door opening is 200cm (6ft 7in).

Level Change (Hampden Experience Entrance)

Photos



1



2



3



4



5



6



7



8

- There is a ramp/slope to access this area/service.
- The ramp/slope is located to either side of the entrance steps.
- The ramp/slope gradient is slight.
- The ramp/slope is permanent.
- There is a level landing at the top of the ramp/slope.
- The ramp does have handrails.
- The handrails are on both sides.
- There is a/are step(s) to access this area/service.
- The step(s) is/are located leading up to the entrance.
- There is/are 15+ step(s) to the area/service.
- The lighting levels at the step(s) are moderate to good.
- There is not tactile paving at the top and bottom of the steps.
- The step(s) is/are not clearly marked.
- The step(s) is/are medium height (11cm - 17cm).
- There is a/are handrail(s) at the step(s).
- The handrail(s) is/are on both sides.

Comments

View

- There is an accessible entrance that can be used instead of the Hampden Experience entrance.

Outside Access (Accessible Entrance)

Photos



1



2



3



4



5



6

-
- This information is for the entrance located at the front of the South Stand.
 - There is not level access into the venue.
 - There is an intercom.
 - The height of the intercom is 120cm (3ft 11in).
 - The main door(s) open(s) towards you (pull).
 - The door(s) is/are double.
 - The door(s) is/are heavy.
 - The width of the door opening is 140cm (4ft 7in).

Level Change (Accessible Entrance)

Photos



1

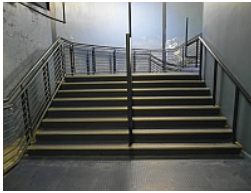


2

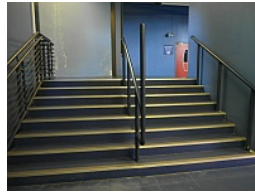
-
- There is a ramp/slope to access this area/service.
 - The ramp/slope is located leading down to the entrance.
 - The ramp/slope gradient is slight.
 - The ramp/slope is permanent.

Other Floors

Photos



1



2

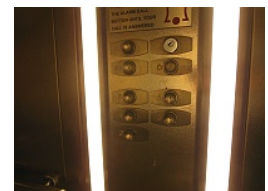
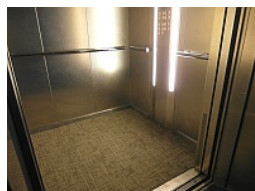
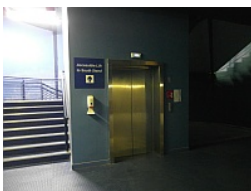
Steps

View

- The floors which are accessible by stairs are 1, 2, 3.
- There are 15+ steps between floors.
- The steps are clearly marked.
- The steps are medium height (11cm - 17cm).
- The steps do have handrails.
- The steps have a handrail on both sides.
- There is a landing.
- The lighting levels are good.

Lift (Museum)

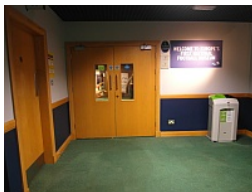
Photos



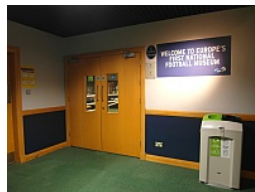
-
- There is a lift for public use.
 - The lift is located to the left as you enter.
 - The lift is a standard lift.
 - The floors which are accessible by this lift are 1, 2, 3.
 - There are manual, double doors which may be difficult to open to access the lift lobby on all floors.
 - The lift is approximately 30m (32yd 2ft) from the accessible entrance.
 - Staff do not need to be notified for use of the lift.
 - The clear door width is 110cm (3ft 7in).
 - The dimensions of the lift are 152cm x 135cm (4ft 12in x 4ft 5in).
 - There are not separate entry and exit doors in the lift.
 - There is a mirror to aid reversing out of the lift.
 - The lift does have a visual floor indicator.
 - The lift does have an audible announcer.
 - The controls for the lift are within 90cm - 120cm from the floor.
 - The lift does not have Braille markings.
 - The lift does have tactile markings.
 - The lighting level in the lift is good.

Outside Access (Museum Entrance)

Photos



1



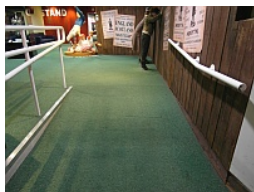
2

-
- This information is for the entrance located on the second floor.
 - There is not level access into the venue.

- The main door(s) open(s) away from you (push).
- The door(s) is/are double.
- The door(s) is/are heavy.
- The width of the door opening is 170cm (5ft 7in).

Level Change (Museum Entrance)

Photos



1



2

-
- There is a ramp/slope to access this area/service.
 - The ramp/slope is located beyond the entrance.
 - The ramp/slope gradient is slight.
 - The ramp/slope is permanent.
 - There is a level landing at the top of the ramp/slope.
 - The ramp does have handrails.
 - The handrails are on both sides.

Inside Access

Photos



1



2



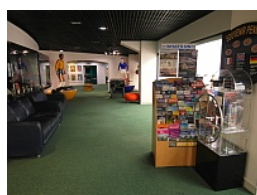
3



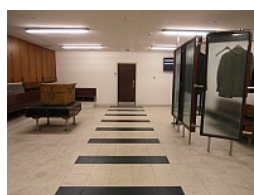
4



5



6



7



8

- There is level access to the service(s).
- There is not a hearing assistance system.
- This venue does play background music.
- Music is played throughout the building.
- Motorised scooters are allowed in public parts of the venue.
- The lighting levels are varied.

Museum

Photos



1



2



3



4



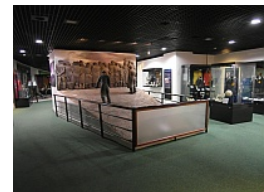
5



6



7



8



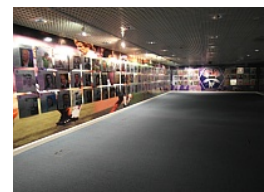
9



10



11



12

-
- Exhibits can be audio described.
 - Tactile signage for exhibits is not available.
 - Braille signage for exhibits is not available.
 - Touch tours are available.
 - The availability of touch tours does not depend on exhibition.
 - Video tours are not available.
 - There is not a hearing assistance system.
 - Concessions are available.

- There is a wheelchair to borrow.
- To borrow the wheelchair, contact a member of staff.

Accessible Toilet

Photos



1



2



3



4



5



6

-
- Accessible toilet facilities are available.

Location and Access

[View](#)

- There is pictorial signage on or near the toilet door.
- This accessible toilet is approximately 3m (3yd 10in) from the museum entrance.
- This accessible toilet is located on the second floor.
- There is level access to this accessible toilet.

Features and Dimensions

[View](#)

- This is a shared toilet.
- A key is not required for the accessible toilet.
- The door opens outwards.
- The door is locked by a twist lock.
- The width of the accessible toilet door is 86cm (2ft 10in).
- The door is easy to open.

- The dimensions of the accessible toilet are 180cm x 210cm (5ft 11in x 6ft 11in).
- There is not sufficient turning space in the cubicle for a wheelchair user.
- There is a lateral transfer space.
- As you face the toilet pan the transfer space is on the left.
- The lateral transfer space is 150cm (4ft 11in).
- There is a dropdown rail on the transfer side.
- There is a flush on the transfer side.
- The tap type is lever.
- There is a mixer tap.
- There is an emergency alarm.
- The emergency pull cord alarm is not fully functional.
- The alarm was out of reach (higher than 10cm (4") from floor) when surveyed.
- Disposal facilities are available in the cubicle.
- There is a/are sanitary and non-infectious waste disposal units.
- There is not a/are not coat hook(s).

Position of Fixtures

View

- Wall mounted grab rails are available for the toilet.
- As you face the toilet the wall-mounted grab rails are on both sides.
- There is not a shelf within the accessible toilet.
- There is a mirror.
- Mirrors are placed at a lower level or at an angle for ease of use.
- The height of the toilet seat above floor level is 45cm (1ft 6in).
- There is a hand dryer.
- The hand dryer cannot be reached from seated on the toilet.
- The hand dryer is not placed higher than 100cm (3ft 3in).
- There is a toilet roll holder.
- The toilet roll holder can be reached from seated on the toilet.

- The toilet roll holder is placed higher than 100cm (3ft 3in).
- The height of the toilet roll holder is 105cm (3ft 5in).
- There is a wash basin.
- The wash basin can be reached from seated on the toilet.
- The wash basin is not placed higher than 74cm (2ft 5in).

Colour Contrast and Lighting

[View](#)

- The contrast between the external door and wall is good.
- The contrast between the internal door and wall is good.
- The contrast between the wall-mounted grab rail(s) and wall is good.
- The contrast between the dropdown rail(s) and wall is good.
- The contrast between the walls and floor is good.
- The lighting levels are good.

Baby Change Facilities

[View](#)

- Baby change facilities are located within the venue.
- Baby change facilities are located within the accessible toilet.
- The height of the baby change table once extended is 80cm (2ft 7in).

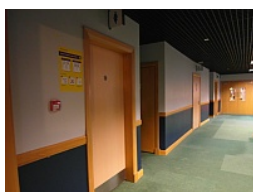
Comments

[View](#)

- There is a similar accessible toilet offering transfer space to the right near the café.
- Please refer to the separate Hampden Café guide for details.

Standard Toilet(s)

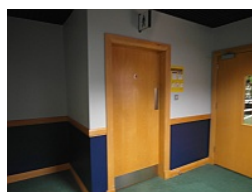
Photos



1



2



3



4



5



6



7



8

Availability and Location of Standard Toilets

[View](#)

- Standard toilet facilities are available.

Access to Standard Female and Male Toilet(s)

[View](#)

- The female and male toilet facilities that were surveyed are located along the corridor.
- The female and male toilets are approximately 5m (5yd 1ft) from the museum entrance.
- Inside the venue, there is level access to the female and male toilets.
- Lighting levels in the female and male toilets are good.

Comments

[View](#)

- There are separate entrance and exit doors to the standard toilets, following a one-way system throughout.

Additional Info

- Staff do receive disability awareness / equality training.
- A bowl of water can be provided for an assistance dog.
- A member of staff trained in BSL skills is not normally on duty.