



## Hampden Stadium Tour

Hampden Park, Letherby Drive, Mount Florida, Glasgow, G42 9BA

0141 616 6139 (tel:0141 616 6139)

Send email (<mailto:info@scottishfootballmuseum.org.uk>)

Visit website (<http://www.scottishfootballmuseum.org.uk>)



## Access Guide

### Introduction

- Services/facilities within the building include Hampden Park stadium tour and café/bar.
- Services/facilities within the grounds include the Scottish Football Museum.
- Related link Scotland's National Stadium.
- <https://www.accessable.co.uk/glasgow-city-council/access-guides/scotland-s-national-stadium> (<https://www.accessable.co.uk/glasgow-city-council/access-guides/scotland-s-national-stadium>)
- Related link Scottish Football Museum.
- <https://www.accessable.co.uk/glasgow-city-council/access-guides/scottish-football-museum> (<https://www.accessable.co.uk/glasgow-city-council/access-guides/scottish-football-museum>)
- Related link Hampden Café.

- <https://www.accessable.co.uk/glasgow-city-council/access-guides/hampden-cafe> (<https://www.accessable.co.uk/glasgow-city-council/access-guides/hampden-cafe>)

## Opening Hours

- [For information about the opening hours please click here](https://scottishfootballmuseum.org.uk/contact-us) (<https://scottishfootballmuseum.org.uk/contact-us>).

## Location

- The venue is situated outside the centre of the city.
- This venue is situated in Glasgow.
- The venue is not situated on a road which has a steep gradient.
- There is a bus stop within 150m (164yds) of the venue.
- The nearest mainline station is Mount Florida Station.

## Parking (Non Match Days)



### Photos



1



2



3



4

- 
- The venue does have its own car park.

## Venue Car Park

[View](#)

- Parking is free for all users.
- The car park is located at the front of the building.
- The car park type is open air/surface.
- There is/are 4 Blue Badge parking bay(s) within the car park.
- The dimensions of the Blue Badge parking bay(s) are 340cm x 500cm (11ft 2in x 16ft 5in).

- The nearest Blue Badge bay is 30m (32yd 2ft) from the accessible entrance.
- The route from the car park to the entrance is accessible to a wheelchair user unaided.
- The car park surface is tarmac.
- There is not a road to cross between the car park and the entrance.
- The car park does not have a height restriction barrier.

## Drop-off Point

[View](#)

- There is not a designated drop off point.

## Outside Access (Accessible Entrance)

### Photos



1



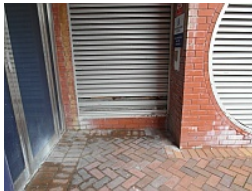
2



3



4



5



6

- 
- This information is for the entrance located at the front of the South Stand.
  - There is not level access into the venue.
  - There is an intercom.
  - The height of the intercom is 120cm (3ft 11in).
  - The main door(s) open(s) towards you (pull).
  - The door(s) is/are double.
  - The door(s) is/are heavy.
  - The width of the door opening is 140cm (4ft 7in).

## Level Change (Accessible Entrance)

### Photos



1



2

- 
- There is a ramp/slope to access this area/service.
  - The ramp/slope is located leading down to the entrance.
  - The ramp/slope gradient is slight.
  - The ramp/slope is permanent.

## Outside Access (Hampden Experience Entrance)

### Photos



1



2



3



4

- 
- This information is for the entrance located at the front of the building.
  - There is not level access into the venue.
  - The main door(s) open(s) towards you (pull).
  - The door(s) is/are double.
  - The door(s) is/are heavy.
  - The width of the door opening is 200cm (6ft 7in).

## Level Change (Hampden Experience Entrance)

### Photos



1



2



3



4



5



6



7



8

- 
- There is a ramp/slope to access this area/service.
  - The ramp/slope is located to either side of the entrance steps.
  - The ramp/slope gradient is slight.
  - The ramp/slope is permanent.
  - There is a level landing at the top of the ramp/slope.
  - The ramp does have handrails.
  - The handrails are on both sides.
  - There is a/are step(s) to access this area/service.
  - The step(s) is/are located leading up to the entrance.
  - There is/are 15+ step(s) to the area/service.
  - The lighting levels at the step(s) are moderate to good.
  - There is not tactile paving at the top and bottom of the steps.
  - The step(s) is/are not clearly marked.
  - The step(s) is/are medium height (11cm - 17cm).
  - There is a/are handrail(s) at the step(s).
  - The handrail(s) is/are on both sides.

**Comments**

**View**

- There is an accessible entrance that can be used instead of the Hampden Experience entrance.

## Outside Access (Café Entrance)

### Photos



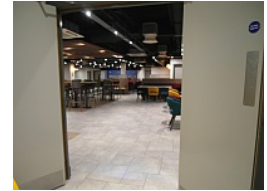
1



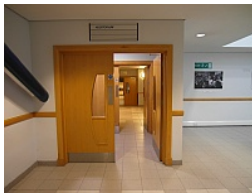
2



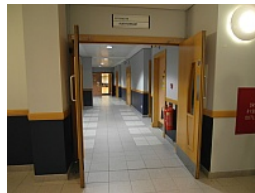
3



4



5



6

- 
- This information is for the entrance located off the main corridor, to the right from the lift.
  - There is level access into the venue.
  - The main door(s) open(s) towards you (pull).
  - The door(s) is/are double.
  - The door(s) is/are permanently held open.
  - The width of the door opening is 150cm (4ft 11in).

### Second set of doors

**View**

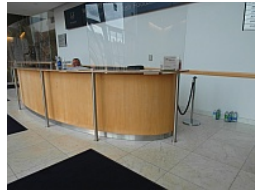
- There is a second set of doors.
- The door(s) open(s) towards you (pull).
- The door(s) is/are double.
- The door(s) is/are permanently held open.
- The width of the door opening is 150cm (4ft 11in).

## Reception (Main Entrance)

### Photos



1



2

- 
- The desk/counter is 5m (5yd 1ft) from the main entrance.
  - There is level access to the desk/counter from the entrance.
  - The desk/counter is high (110cm+).
  - The desk/counter does not have a low (76cm or lower) section.
  - The lighting levels are good.
  - There is not a hearing assistance system.

## Inside Access

### Photos



1



2



3



4

- 
- There is level access to the service(s).
  - There is not a hearing assistance system.
  - This venue does not play background music.
  - Motorised scooters are allowed in public parts of the venue.
  - The lighting levels are good.

## Tour Route

### Photos



1



2



3



4



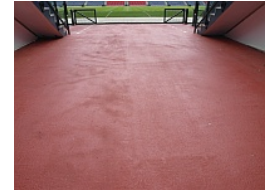
5



6



7



8



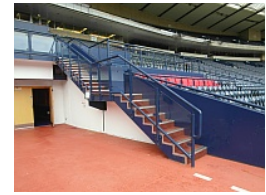
9



10



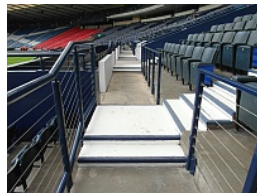
11



12



13



14



15



16



17



18



19

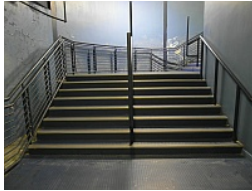
- 
- The tour starts at the Hampden Cafe.
  - Then a lift is taken down to the roadway and a talk is given.
  - The tour then moves onto the east/west changing rooms and the referees changing room and training area.
  - There is then an easy slope leading to the pitch shown in photographs 7 and 8.
  - The tour continues pitch side and covers the area where trophies are lifted.
  - There are steps up to this area, or returning inside the lift can be used to the floor above with another easy slope to this area.



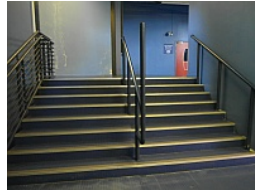
- The 15+ steps are clearly marked, medium height with handrails on both sides, or there are shallower steps which do not offer a handrail.
- The tour concludes in this pitch side area.

## Other Floors

### Photos



1



2

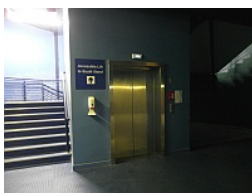
## Steps

### View

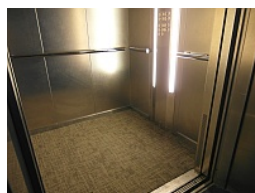
- The floors which are accessible by stairs are 1, 2, 3.
- There are 15+ steps between floors.
- The steps are clearly marked.
- The steps are medium height (11cm - 17cm).
- The steps do have handrails.
- The steps have a handrail on both sides.
- There is a landing.
- The lighting levels are good.

## Lift (Museum)

### Photos



1



2



3



4

- There is a lift for public use.
- The lift is located to the left as you enter.

- The lift is a standard lift.
- The floors which are accessible by this lift are 1, 2, 3.
- There are manual, double doors which may be difficult to open to access the lift lobby on all floors.
- The lift is approximately 30m (32yd 2ft) from the accessible entrance.
- Staff do not need to be notified for use of the lift.
- The clear door width is 110cm (3ft 7in).
- The dimensions of the lift are 152cm x 135cm (4ft 12in x 4ft 5in).
- There are not separate entry and exit doors in the lift.
- There is a mirror to aid reversing out of the lift.
- The lift does have a visual floor indicator.
- The lift does have an audible announcer.
- The controls for the lift are within 90cm - 120cm from the floor.
- The lift does not have Braille markings.
- The lift does have tactile markings.
- The lighting level in the lift is good.

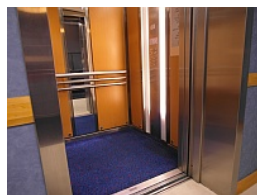
## Lift (Main)



### Photos



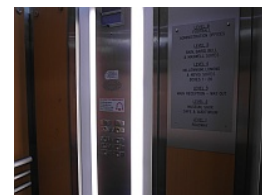
1



2



3



4

- 
- The lift is located beyond the reception.
  - The lift is a standard lift.
  - The floors which are accessible by this lift are 1, 2, 3, 4, 5, 6.
  - The lift is approximately 14m (15yd 11in) from the main entrance.
  - Staff do not need to be notified for use of the lift.
  - The clear door width is 110cm (3ft 7in).
  - The dimensions of the lift are 140cm x 155cm (4ft 7in x 5ft 1in).

- There are not separate entry and exit doors in the lift.
- There is a mirror to aid reversing out of the lift.
- The lift does have a visual floor indicator.
- The lift does have an audible announcer.
- The controls for the lift are within 90cm - 120cm from the floor.
- The lift does have Braille markings.
- The lift does have tactile markings.
- The lighting level in the lift is good.

## Comments

[View](#)

- There is a similar lift to use for the accessible entrance.

## Accessible Toilet

### Photos



1



2



3



4



5



6

- 
- Accessible toilet facilities are available.

## Location and Access

[View](#)

- There is pictorial, written text and 'Not All Disabilities Are Visible' signage on or near the toilet door.
- This accessible toilet is approximately 35m (38yd 10in) from the lift.
- This accessible toilet is located to the right from the lift, in the café corridor.

- There is level access to this accessible toilet.

## Features and Dimensions

[View](#)

- This is a shared toilet.
- A key is not required for the accessible toilet.
- The door opens outwards.
- The door is locked by a twist lock.
- The width of the accessible toilet door is 89cm (2ft 11in).
- The door is easy to open.
- The dimensions of the accessible toilet are 223cm x 209cm (7ft 4in x 6ft 10in).
- There is not sufficient turning space in the cubicle for a wheelchair user.
- There is a lateral transfer space.
- As you face the toilet pan the transfer space is on the right.
- The lateral transfer space is 160cm (5ft 3in).
- There is a dropdown rail on the transfer side.
- There is a flush on the transfer side.
- The tap type is lever.
- There is a mixer tap.
- There is an emergency alarm.
- The emergency pull cord alarm is fully functional.
- Disposal facilities are available in the cubicle.
- There is a/are sanitary, non-infectious waste and open waste paper bin disposal units.
- There is not a/are not coat hook(s).

## Position of Fixtures

[View](#)

- Wall mounted grab rails are available for the toilet.
- As you face the toilet the wall-mounted grab rails are on both sides.
- There is a shelf within the accessible toilet.

- The shelf does not have the minimum dimensions of 12.5cm x 40cm.
- The shelf is at a height of 85cm.
- The shelf is not located where it is reachable.
- There is a mirror.
- Mirrors are not placed at a lower level or at an angle for ease of use.
- The height of the toilet seat above floor level is 45cm (1ft 6in).
- There is a hand dryer.
- The hand dryer cannot be reached from seated on the toilet.
- The hand dryer is not placed higher than 100cm (3ft 3in).
- There is a towel dispenser.
- The towel dispenser can be reached from seated on the toilet.
- The towel dispenser is placed higher than 100cm (3ft 3in).
- The height of the towel dispenser is 105cm (3ft 5in).
- There is a toilet roll holder.
- The toilet roll holder can be reached from seated on the toilet.
- The toilet roll holder is not placed higher than 100cm (3ft 3in).
- There is a wash basin.
- The wash basin can be reached from seated on the toilet.
- The wash basin is not placed higher than 74cm (2ft 5in).

## **Colour Contrast and Lighting**

**View**

- The contrast between the external door and wall is good.
- The contrast between the internal door and wall is fair.
- The contrast between the wall-mounted grab rail(s) and wall is good.
- The contrast between the dropdown rail(s) and wall is good.
- The contrast between the walls and floor is good.
- The lighting levels are moderate to good.

## **Baby Change Facilities**

**View**

- Baby change facilities are located within the venue.

- Baby change facilities are located within the accessible toilet.
- The height of the baby change table once extended is 98cm (3ft 3in).

## Comments

[View](#)

- There is a similar accessible toilet offering transfer space to the left adjacent to the museum.
- Please refer to the separate Football Museum guide for details.

## Standard Toilet(s)

### Photos



1



2



3



4



5



6



7



8



9



10

## Availability and Location of Standard Toilets

[View](#)

- Standard toilet facilities are available.

## Access to Standard Female and Male Toilet(s)

[View](#)

- The female and male toilet facilities that were surveyed are located along the corridor.

- The female and male toilets are approximately 4m (4yd 1ft) from the café entrance.
- Inside the venue, there is level access to the female and male toilets.
- Lighting levels in the female and male toilets are good.

## Comments

[View](#)

- There are separate entry and exit doors to the toilets which follow a one-way system throughout.

## Additional Info

- Documents are not available in Braille.
- Documents can be requested in large print.
- A bowl of water can be provided for an assistance dog.
- An assistance dog toilet area can be provided onsite.
- The assistance dog toilet area is located at the side of the car park.
- A member of staff trained in BSL skills is not normally on duty.