



Hampden Café

Hampden Park, Letherby Drive, Mount Florida, Glasgow, G42 9BA

01416 166 139 (tel:01416 166 139)

Send email (<mailto:info@scottishfootballmuseum.org.uk>)

Visit website (<http://www.scottishfootballmuseum.org.uk>)



Access Guide

Introduction

- Services/facilities within the building include the café bar.
- Services/facilities within the grounds include the Hampden Experience tour, the football museum and the national stadium.
- Related link Scotland's National Stadium.
- <https://www.accessable.co.uk/glasgow-city-council/access-guides/scotland-s-national-stadium> (<https://www.accessable.co.uk/glasgow-city-council/access-guides/scotland-s-national-stadium>)
- Related link Scottish Football Museum.
- <https://www.accessable.co.uk/glasgow-city-council/access-guides/scottish-football-museum> (<https://www.accessable.co.uk/glasgow-city-council/access-guides/scottish-football-museum>)
- Related link Hampden Experience - Tour.

- <https://www.accessable.co.uk/venues/hampden-experience-tour>
(<https://www.accessable.co.uk/venues/hampden-experience-tour>)

Opening Times

- Monday 10:00 - 17:00.
- Tuesday 10:00 - 17:00.
- Wednesday 10:00 - 17:00.
- Thursday 10:00 - 17:00.
- Friday 10:00 - 17:00.
- Saturday 10:00 - 17:00.
- Sunday 11:00 - 16:00.

Location

- The venue is situated outside the centre of the city.
- This venue is situated in Glasgow.
- The venue is not situated on a road which has a steep gradient.
- There is a bus stop within 150m (164yds) of the venue.
- The nearest mainline station is Mount Florida Station.

Parking (Non Match Days)



Photos



1



2



3



4

-
- The venue does have its own car park.

Venue Car Park

View

- Parking is free for all users.
- The car park is located at the front of the building.

- The car park type is open air/surface.
- There is/are 4 Blue Badge parking bay(s) within the car park.
- The dimensions of the Blue Badge parking bay(s) are 340cm x 500cm (11ft 2in x 16ft 5in).
- The nearest Blue Badge bay is 30m (32yd 2ft) from the accessible entrance.
- The route from the car park to the entrance is accessible to a wheelchair user unaided.
- The car park surface is tarmac.
- There is not a road to cross between the car park and the entrance.
- The car park does not have a height restriction barrier.

Drop-off Point

[View](#)

- There is not a designated drop off point.

Outside Access (Hampden Experience Entrance)

Photos



1



2



3



4

-
- This information is for the entrance located at the front of the building.
 - There is not level access into the venue.
 - The main door(s) open(s) towards you (pull).
 - The door(s) is/are double.
 - The door(s) is/are heavy.
 - The width of the door opening is 200cm (6ft 7in).

Level Change (Hampden Experience Entrance)

Photos



1



2



3



4



5



6



7



8

- There is a ramp/slope to access this area/service.
- The ramp/slope is located to either side of the entrance steps.
- The ramp/slope gradient is slight.
- The ramp/slope is permanent.
- There is a level landing at the top of the ramp/slope.
- The ramp does have handrails.
- The handrails are on both sides.
- There is a/are step(s) to access this area/service.
- The step(s) is/are located leading up to the entrance.
- There is/are 15+ step(s) to the area/service.
- The lighting levels at the step(s) are moderate to good.
- There is not tactile paving at the top and bottom of the steps.
- The step(s) is/are not clearly marked.
- The step(s) is/are medium height (11cm - 17cm).
- There is a/are handrail(s) at the step(s).
- The handrail(s) is/are on both sides.

Comments

View

- There is an accessible entrance that can be used instead of the Hampden Experience entrance.

Outside Access (Accessible Entrance)

Photos



1



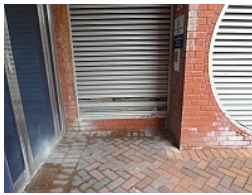
2



3



4



5



6

-
- This information is for the entrance located at the front of the South Stand.
 - There is not level access into the venue.
 - There is an intercom.
 - The height of the intercom is 120cm (3ft 11in).
 - The main door(s) open(s) towards you (pull).
 - The door(s) is/are double.
 - The door(s) is/are heavy.
 - The width of the door opening is 140cm (4ft 7in).

Level Change (Accessible Entrance)

Photos



1

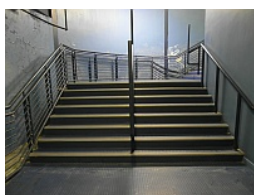


2

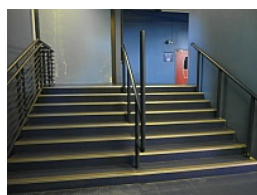
-
- There is a ramp/slope to access this area/service.
 - The ramp/slope is located leading down to the entrance.
 - The ramp/slope gradient is slight.
 - The ramp/slope is permanent.

Other Floors

Photos



1



2

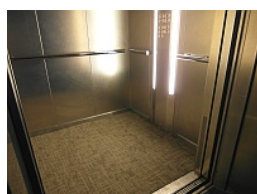
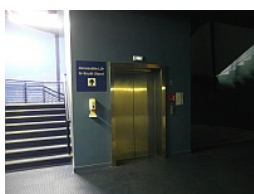
Steps

View

- The floors which are accessible by stairs are 1, 2, 3.
- There are 15+ steps between floors.
- The steps are clearly marked.
- The steps are medium height (11cm - 17cm).
- The steps do have handrails.
- The steps have a handrail on both sides.
- There is a landing.
- The lighting levels are good.

Lift (Museum)

Photos

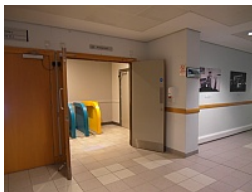


- There is a lift for public use.
- The lift is located to the left as you enter.
- The lift is a standard lift.
- The floors which are accessible by this lift are 1, 2, 3.
- There are manual, double doors which may be difficult to open to access the lift lobby on all floors.
- The lift is approximately 30m (32yd 2ft) from the accessible entrance.
- Staff do not need to be notified for use of the lift.
- The clear door width is 110cm (3ft 7in).
- The dimensions of the lift are 152cm x 135cm (4ft 12in x 4ft 5in).
- There are not separate entry and exit doors in the lift.
- There is a mirror to aid reversing out of the lift.
- The lift does have a visual floor indicator.
- The lift does have an audible announcer.
- The controls for the lift are within 90cm - 120cm from the floor.
- The lift does not have Braille markings.
- The lift does have tactile markings.
- The lighting level in the lift is good.

Outside Access (Café Entrance)



Photos



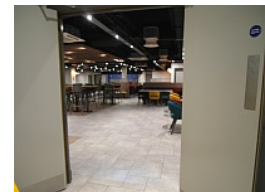
1



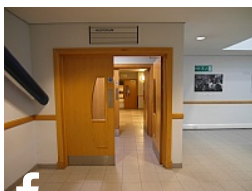
2



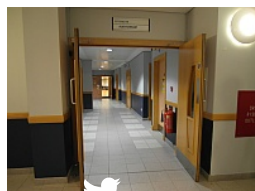
3



4



5



6

- This information is for the entrance located off the main corridor, to the right from the lift.
- There is level access into the venue.
- The main door(s) open(s) towards you (pull).
- The door(s) is/are double.
- The door(s) is/are permanently held open.
- The width of the door opening is 150cm (4ft 11in).

Second set of doors

View

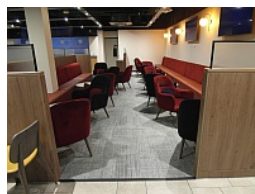
- There is a second set of doors.
- The door(s) open(s) towards you (pull).
- The door(s) is/are double.
- The door(s) is/are permanently held open.
- The width of the door opening is 150cm (4ft 11in).

Inside Access

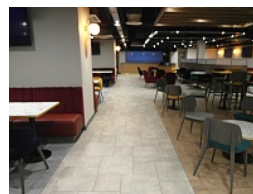
Photos



1



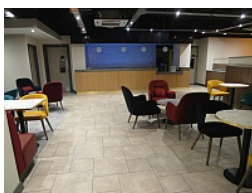
2



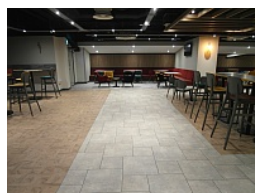
3



4



5



6

- There is level access to the service(s).

- There is not a hearing assistance system.
- This venue does not play background music.
- Motorised scooters are allowed in public parts of the venue.
- The lighting levels are good.

Eating and Drinking

Photos



1



2



3



4



5



6



7



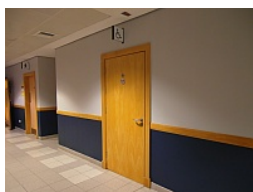
8

-
- The following information is for the café.
 - Full table service is not available.
 - Food or drinks are ordered from the service counter.
 - Food or drinks can be brought to the table.
 - There is not a lowered section at the counter.
 - No tables are permanently fixed.
 - Some chairs are permanently fixed.
 - Some chairs have armrests.
 - The nearest table is approximately 5m (5yd 1ft) from the café entrance.
 - The distance between the floor and the lowest table is 46cm (1ft 6in).
 - The distance between the floor and the highest table is 109cm (3ft 7in).
 - The standard height for tables is 72cm.
 - There is ample room for a wheelchair user to manoeuvre.
 - Menus are wall only.
 - Menus are clearly written.

- Menus are presented in contrasting colours.
- The type of food served here is snacks.

Accessible Toilet

Photos



1



2



3



4



5



6

-
- Accessible toilet facilities are available.

Location and Access

View

- There is pictorial, written text and 'Not All Disabilities Are Visible' signage on or near the toilet door.
- This accessible toilet is approximately 35m (38yd 10in) from the lift.
- This accessible toilet is located to the right from the lift, in the café corridor.
- There is level access to this accessible toilet.

Features and Dimensions

View

- This is a shared toilet.
- A key is not required for the accessible toilet.
- The door opens outwards.
- The door is locked by a twist lock.
- The width of the accessible toilet door is 89cm (2ft 11in).
- The door is easy to open.

- The dimensions of the accessible toilet are 223cm x 209cm (7ft 4in x 6ft 10in).
- There is not sufficient turning space in the cubicle for a wheelchair user.
- There is a lateral transfer space.
- As you face the toilet pan the transfer space is on the right.
- The lateral transfer space is 160cm (5ft 3in).
- There is a dropdown rail on the transfer side.
- There is a flush on the transfer side.
- The tap type is lever.
- There is a mixer tap.
- There is an emergency alarm.
- The emergency pull cord alarm is fully functional.
- Disposal facilities are available in the cubicle.
- There is a/are sanitary, non-infectious waste and open waste paper bin disposal units.
- There is not a/are not coat hook(s).

Position of Fixtures

View

- Wall mounted grab rails are available for the toilet.
- As you face the toilet the wall-mounted grab rails are on both sides.
- There is a shelf within the accessible toilet.
- The shelf does not have the minimum dimensions of 12.5cm x 40cm.
- The shelf is at a height of 85cm.
- The shelf is not located where it is reachable.
- There is a mirror.
- Mirrors are not placed at a lower level or at an angle for ease of use.
- The height of the toilet seat above floor level is 45cm (1ft 6in).
- There is a hand dryer.
- The hand dryer cannot be reached from seated on the toilet.
- The hand dryer is not placed higher than 100cm (3ft 3in).

- There is a towel dispenser.
- The towel dispenser can be reached from seated on the toilet.
- The towel dispenser is placed higher than 100cm (3ft 3in).
- The height of the towel dispenser is 105cm (3ft 5in).
- There is a toilet roll holder.
- The toilet roll holder can be reached from seated on the toilet.
- The toilet roll holder is not placed higher than 100cm (3ft 3in).
- There is a wash basin.
- The wash basin can be reached from seated on the toilet.
- The wash basin is not placed higher than 74cm (2ft 5in).

Colour Contrast and Lighting

View

- The contrast between the external door and wall is good.
- The contrast between the internal door and wall is fair.
- The contrast between the wall-mounted grab rail(s) and wall is good.
- The contrast between the dropdown rail(s) and wall is good.
- The contrast between the walls and floor is good.
- The lighting levels are moderate to good.

Baby Change Facilities

View

- Baby change facilities are located within the venue.
- Baby change facilities are located within the accessible toilet.
- The height of the baby change table once extended is 98cm (3ft 3in).

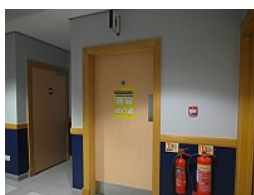
Comments

View

- There is a similar accessible toilet offering transfer space to the left adjacent to the museum.
- Please refer to the separate Football Museum guide for details.

Standard Toilet(s)

Photos



1



2



3



4



5



6



7



8



9



10

Availability and Location of Standard Toilets

[View](#)

- Standard toilet facilities are available.

Access to Standard Female and Male Toilet(s)

[View](#)

- The female and male toilet facilities that were surveyed are located along the corridor.
- The female and male toilets are approximately 4m (4yd 1ft) from the café entrance.
- Inside the venue, there is level access to the female and male toilets.
- Lighting levels in the female and male toilets are good.

Comments

[View](#)

- There are separate entry and exit doors to the toilets which follow a one-way system throughout.

Additional Info

- Staff do receive disability awareness / equality training.
- A bowl of water can be provided for an assistance dog.
- A member of staff trained in BSL skills is not normally on duty.